

# 2009 PABCON YOUTH CHAMPIONSHIPS - SHORT V1



Oil Per Board: **40 uL**      Oil Pattern Distance: **35 Feet**      Volume Oil Total: **25.84 mL**      Total Boards Crossed: **646 Boards**

Forward Oil Total: **13.24 mL**      Reverse Oil Total: **12.6 mL**  
 Forward Boards Crossed: **331 Boards**      Reverse Boards Crossed: **315 Boards**

|   | Start | Stop | Loads | Speed | Crossed | Start | End  | Feet | T.Oil |
|---|-------|------|-------|-------|---------|-------|------|------|-------|
| 1 | 2L    | 2R   | 2     | 14    | 74      | 0.0   | 1.9  | 1.9  | 2960  |
| 2 | 4L    | 4R   | 1     | 18    | 33      | 1.9   | 4.4  | 2.5  | 1320  |
| 3 | 5L    | 5R   | 2     | 18    | 62      | 4.4   | 9.5  | 5.1  | 2480  |
| 4 | 6L    | 6R   | 2     | 18    | 58      | 9.5   | 14.6 | 5.1  | 2320  |
| 5 | 7L    | 7R   | 2     | 18    | 54      | 14.6  | 19.7 | 5.1  | 2160  |
| 6 | 8L    | 8R   | 2     | 18    | 50      | 19.7  | 24.8 | 5.1  | 2000  |
| 7 | 2L    | 2R   | 0     | 26    | 0       | 24.8  | 35.0 | 10.2 | 0     |

Navigation:

|   | Start | Stop | Loads | Speed | Crossed | Start | End  | Feet | T.Oil |
|---|-------|------|-------|-------|---------|-------|------|------|-------|
| 1 | 2L    | 2R   | 0     | 30    | 0       | 35.0  | 28.0 | -7.0 | 0     |
| 2 | 9L    | 9R   | 2     | 18    | 46      | 28.0  | 22.9 | -5.1 | 1840  |
| 3 | 8L    | 8R   | 1     | 18    | 25      | 22.9  | 20.4 | -2.5 | 1000  |
| 4 | 7L    | 7R   | 2     | 14    | 54      | 20.4  | 16.5 | -3.9 | 2160  |
| 5 | 6L    | 6R   | 2     | 14    | 58      | 16.5  | 12.6 | -3.9 | 2320  |
| 6 | 5L    | 5R   | 2     | 14    | 62      | 12.6  | 8.7  | -3.9 | 2480  |
| 7 | 3L    | 3R   | 2     | 14    | 70      | 8.7   | 4.8  | -3.9 | 2800  |
| 8 | 2L    | 2R   | 0     | 10    | 0       | 4.8   | 0.0  | -4.8 | 0     |

Navigation:

**Report Date**

**5/25/2009**

**Conditioner:**

Type In or Select One

**TransferType:**

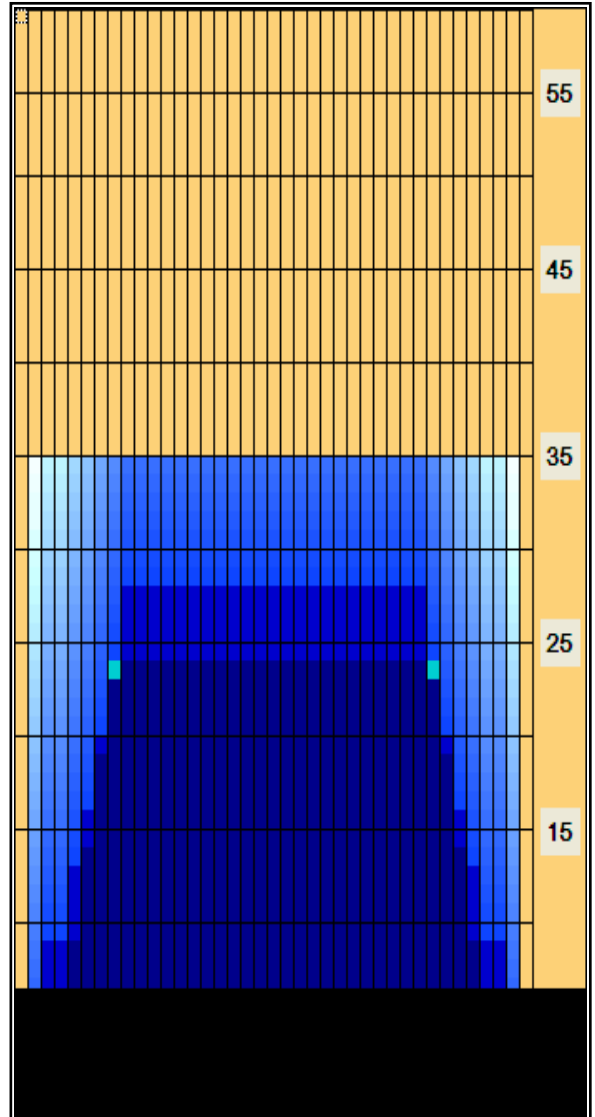
Type In or Select One

**Forward Oil**

**Reverse Oil**

**Combined Oil**

**Buff Area**



**Arrow Zone Ratios**

| Item       | 2-5L:16L-20 | 6-10L:16-20 | 11-15L:16L-20 | 16L-20:20-16R | 16L-20:20-16R | 20-16R:15-11R | 20-16R:10-6R | 20-16R:5-2R |
|------------|-------------|-------------|---------------|---------------|---------------|---------------|--------------|-------------|
| ul Arrow   | 200         | 752         | 880           | 880           | 880           | 880           | 752          | 200         |
| Zone Ratio | 4.4         | 1.17        | 1             | 1             | 1             | 1             | 1.17         | 4.4         |

**Track Zone Ratios**

| Item             | 3L-7L:18L-18R        | 8L-12L:18L-18R      | 13L-17L:18L-18R     | 18L-18R:17R-13R      | 18L-18R:12R-8R      | 18L-18R:7R-3R        |
|------------------|----------------------|---------------------|---------------------|----------------------|---------------------|----------------------|
| Description      | Outside Track:Middle | Middle Track:Middle | Inside Track:Middle | Middle: Inside Track | Middle:Middle Track | Middle:Outside Track |
| Track Zone Ratio | 2.29                 | 1.02                | 1                   | 1                    | 1.02                | 2.29                 |

